

ROADPRO

www.roadpro.co.uk

The Specialist Supplier of 12V Products for Campervans, Motorhomes & Caravans

If you're looking for high quality 12V accessories that will work efficiently and reliably for many years, have a look through this brochure.

At RoadPro, we have a unique range of products to help get the most out of vehicles, especially if they spend time off-grid. We work closely with some of Europe's leading manufacturers so that, as well as having great products, we offer technical support too.

2024 Product Guide



Solar Power
LILIE
water | light | energy

Page 4



Lithium Batteries

**TECONNEX
POWER**

ERFEKTUM
Lithium Batterie

Page 5



Maxxfan

MAXXAIR

Page 7



12V Electronics

VOTRONIC
MADE IN GERMANY

Page 2



12V Bike Lift

BR-SYSTEMS

Page 9



**Rear-view
Camera Systems**

CAMOS

Page 10



12V Electronics

NDS | **DOMETIC**

Page 3



12V Connectors

PRO CAR
AUTO- UND BOOTSZUBEHÖR

Page 6



Battery Chargers

CTEK
MAXIMIZING BATTERY PERFORMANCE

Page 6



12V Levelling

TESA
**auto
Lift
system**

Page 8



Adhesives & Sealants

DEKALIN

Page 11

For more information and pricing, visit our website
www.roadpro.co.uk

Votronic 12V Products - Vehicle Electronics

VOTRONIC
MADE IN GERMANY

Votronic is Germany's leading manufacturer of 12V products designed specially for campervans and motorhomes. They make a wide range of products which are used by many European motorhome manufacturers and self-builders around the world. If you're looking for high performance in all conditions, combined with maximum reliability, check out the Votronic range.



Control Panels



Tank Sensors



D+ Simulator



Solar Computers



Mini RCDs



**Solar Regulators
165W - 530W**



**Battery
Computers**



**Battery Chargers
15A - 80A**



**Triple Chargers
30A - 60A**



Battery-to-Battery Chargers 20A - 90A



For more information and pricing, visit our website
www.roadpro.co.uk

NDS 12V Products - Vehicle Electronics



NDS is an Italian manufacturer (now owned by Dometic) that has designed and developed a unique range of products for motorhomes, campervans and caravans. Products include triple chargers, inverters, solar regulators, battery monitors, AGM and lithium batteries and one of the best ranges of solar panels on the market. You can see the whole range of products and the NDS catalogue on the RoadPro website.



**AGM Batteries
90Ah - 140Ah**



**LiFePO4 Batteries
100Ah - 150Ah**



**Solar Panels
50W - 200W**



**Pure-Sine Inverters
400W - 3,000W**



**Battery
Computers**



**Solar Regulators
320W - 350W**

**Power Service PSB DC-DC Chargers
40A / 60A / 80A**



**Triple Chargers
30A/40A Engine
+
20A Solar
+
20A EHU**



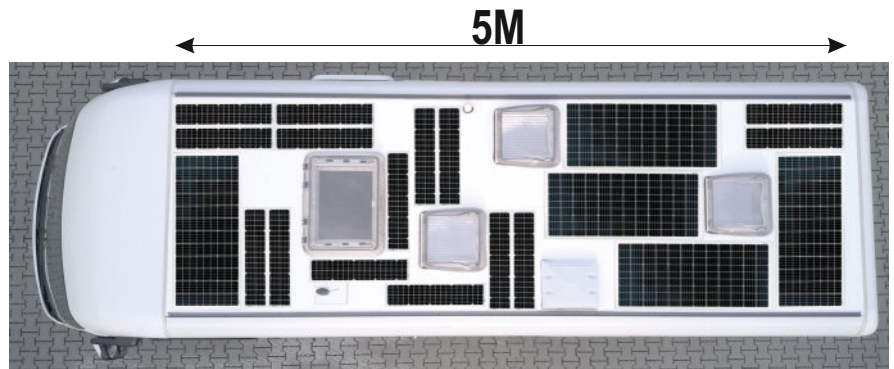
Maximising Solar Power Capacity



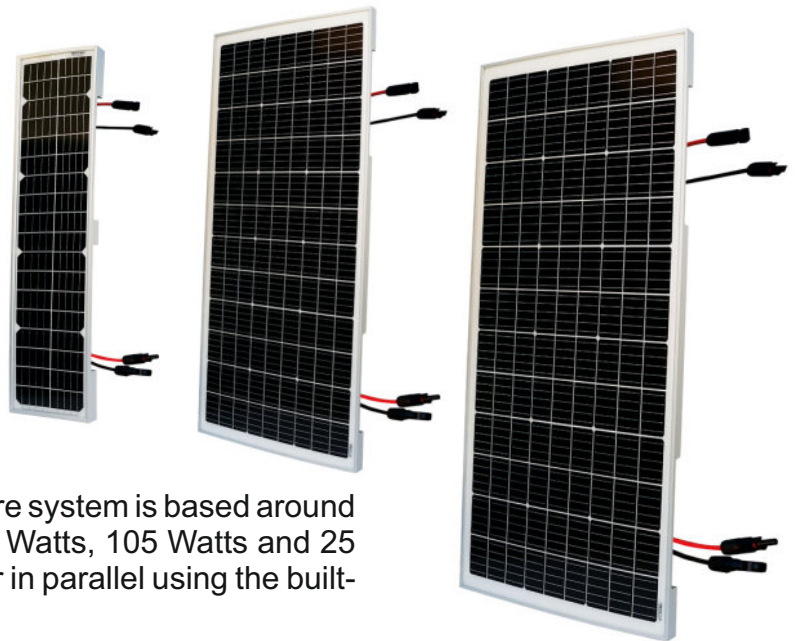
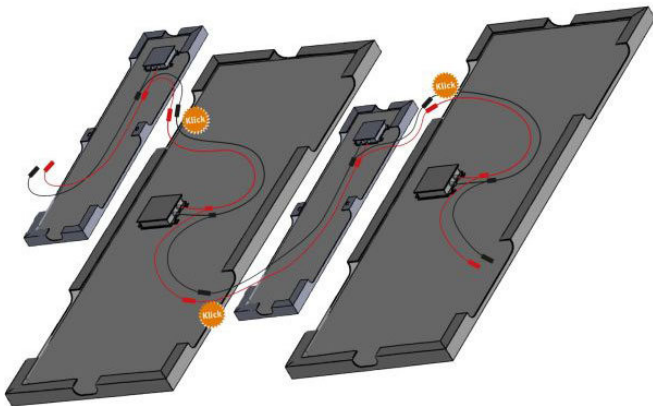
by  **LILIE**
water | light | energy

The Campere system uses special panels and cabling to get round the problem of limited space, enabling hundreds of Watts of solar capacity to be installed on most motorhome and caravan roofs. In the example on the right, there's a total of 900 Watts which, on a sunny day in summer, could charge the batteries at more than 60 Amps!

More and more people want to have as much solar capacity as possible on their motorhomes or caravans. Unfortunately, because of the roof-lights, air-con units, satellite dishes, TV aerials, WiFi aerials and so on, there often isn't room to install much more than a single 100W panel.



900 Watts!!!



Made by German manufacturer Lilie, the Campere system is based around just three mono-crystalline panels, rated at 140 Watts, 105 Watts and 25 Watts. Panels are designed to be linked together in parallel using the built-in high-quality cables with MC4-type connectors.

The main benefit of the Campere system can be seen in this photo of a Knaus motorhome roof. With air-con, satellite dish, WiFi aerial and factory-fitted 100W panel, there was no room for any panel with more than an 85W rating.



Using Campere panels, an additional 155 Watts of solar capacity could be installed.

And, because Campere panels weigh approximately 30% less than most rigid panels, there shouldn't be a problem with weight.



For more information and pricing, visit our website
www.roadpro.co.uk

Batteries & Off-Grid Installation



High quality lithium batteries with all the performance needed for going “off-grid”



Perfektium LiFePO4 batteries are made by one of the leading battery manufacturers in China. High charge and discharge rates make them ideal for use with inverters, even when powering appliances such as induction hobs, microwave ovens and coffee makers.

The quality of the cells, the BMS and the way they're put together guarantee top quality performance and long operational life of at least

4,000 charge and discharge cycles. Standard warranty is six years.

The batteries we keep in stock are all “low-case” so that they fit comfortably under the front seats of most motorhomes and campervans. They're available in 100Ah and 150Ah versions and with or without heating.



Teconnex Advanced 100 batteries are the only lithium leisure batteries we know of that are actually manufactured in the UK, in Keighley, Yorkshire to be precise.

Teconnex is a global leader in engineering, working with some of the biggest names in manufacturing. So, when they put a battery on the market, you can be 100% certain that quality, performance and reliability are guaranteed.

Made to rigorous standards, the Advanced 100 is suitable for motorhomes and campervans. And, it's ideal for caravans, where its power output is sufficient to drive motor-movers as well as run the 12V system. If used with an inverter, it will power 240V appliances too, including microwave ovens, coffee makers, air-fryers, hair-dryers, etc.



Off-grid special products

RoadPro specialises in supplying products which enable people to go off-grid in their motorhomes, campervans and caravans. These include combined RCD/priority switches, D+ simulators (which make correct operation of B2B chargers easy to ensure and various battery computers. As well as supplying the products, we have all the information needed to install them.



**Cliveway RCD/
priority switch**



D+ Simulator



Battery Computers

For more information and pricing, visit our website
www.roadpro.co.uk

Pro Car - When You Need Secure Connections



The World's Leading Manufacturer of 12V Sockets, Plugs & Adaptors

Pro Car 12V/24V plugs, sockets and adaptors are used by vehicle manufacturers all over the world, including many of the top German car and motorhome manufacturers. That's because the quality is the best and the range of products covers just about every requirement. You can see the whole range on our website, including high-power USB sockets for both USB "A" and "C".



CTEK - Getting the Best from your Batteries



The World's Leading Manufacturer of Battery Chargers

The CTEK D250SE is probably the best selling battery-to-battery charger in the world. It not only charges the leisure battery at up to 20A, it also has a built-in solar regulator that can be used with solar panels rated at up to 300W. It's compatible with both lead-acid and lithium batteries. RoadPro is CTEK's specialist distributor for "integrated charging" products but we also stock 10A and 25A mains chargers, ideal for permanent installation in vehicles.



CTEK D250SE
Battery-to-Battery Charger



CTEK SmartPass 120S
Power Manager



CTEK M25
25A 240V Charger for lead-acid
and lithium batteries



CTEK MXS10
10A 240V Battery Charger

For more information and pricing, visit our website
www.roadpro.co.uk

MaxxFan Deluxe - Keeping it Fresh



**Instant Fresh Air at the Touch
of a Button:
Even When it's Raining.**

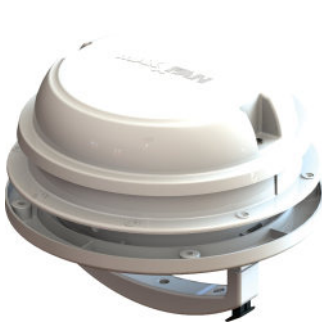


The MaxxFan is a great way to ventilate campervans, motorhomes and caravans. It will fit in a standard 40x40 roof opening and can be left open, even when it's raining. There's a variable speed fan, a thermostat and a choice of sucking fresh air in or blowing stale air out. It's operated by both a built-in control panel and a neat remote control.

The MaxxFan is available with a choice of covers: smoked or tinted.

No room for a MaxxFan Deluxe? Here's the MaxxFan Dome

When you need an extractor fan in the bathroom or kitchen of your campervan, motorhome or caravan but there's not enough space for a full-sized Maxxfan, the Maxxfan Dome could be exactly what you need. Available in white and black, with or without LED lighting, the Maxxfan Dome can be installed on a roof or a side-wall and needs a space of only 220mm in diameter. The Maxxfan Dome runs on 12V and is simple to install and use. See the information sheet on our website for more information.



WiFi on the Move - "Get Connected"



A complete range of WiFi products for campervans, motorhomes & caravans

If you want 'built-in WiFi' in your motorhome or caravan, then look no further.

RoadPro works with Motorhome WiFi to bring you a range of products to suit your requirements. Whether you're in the UK or abroad, having WiFi on board enables you to do get on line in more places than ever. It's just like being at home!



**For more information and pricing, visit our website
www.roadpro.co.uk**

TESA AutoLift - The 12V Self-levelling System



Quick and easy levelling + stability for motorhomes & campervans

The TESA AutoLift is the only levelling system that uses electro-mechanical jacks rather than hydraulics. There are several advantages, not least the fact that the price is much, much lower.

Made in Italy since 2011, the TESA system is sold all over Europe and has been fitted to thousands of motorhomes and campervans. Proven reliability, ease of use and, of course, reasonable pricing have made it a popular choice. Using specially made mounting brackets, the system can be installed on most motorhomes with a G.V.W. of up to 5 tonnes.

It's important to understand that the AutoLift is not just a cheap alternative to a hydraulic system. But, for motorhomers who usually stay on campsites and who simply want to be able to easily level their vehicle and ensure stability when the wind blows, it can be a very practical alternative.

There are five main issues to check on a vehicle when considering if an AutoLift system can be fitted:

- The vehicle has a G.V.W. of no more than 5 tonnes.
- There is a minimum of 35cm clearance between the mounting points on the chassis and the ground. This is especially important for the front jacks on a Ducato.
- Vehicles with 16" wheels are usually compatible. 15" wheels may be OK but check that there is sufficient distance from chassis to ground for the jacks (especially those at the front) to extend.
- If the vehicle has air suspension, and especially if it's less than 6M long, take extra care to check that there is sufficient distance from chassis to ground for the front jacks to extend.
- Mounting brackets are available from TESA. You can see the available brackets on our website.



For more information and pricing, visit our website
www.roadpro.co.uk

BR Bike Lift - The Best Carrier for E-Bikes



BR-SYSTEMS

Transporting eBikes Made Easy



For many motorhomers, lifting a full-size e-bike or two onto an ordinary bike rack is difficult, even impossible.

The BR Bike Lift is unique in the way that it brings bikes down to almost ground level, making it really easy to take them off and put them back on again.

An integrated 12V motor with switch or optional remote control moves the bikes up and down. Maximum load is 60 Kg, making it suitable for 2 e-bikes or 3 standard bikes.

The Bike Lift itself weighs 20 Kg and comes in four versions - see below - making it simple to fit to most motorhomes where there's already provision to fit a bike rack.

To see exactly how easy the Bike Lift is to use, check out the video on our website. There's also a video explaining how to install one.



BIKE LIFT STANDARD



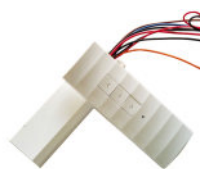
BIKE LIFT STANDARD RAIL
For vehicles equipped with lower mounting rail (rail not included)



BIKE LIFT SHORT



BIKE LIFT SHORT RAIL
For vehicles equipped with lower mounting rail (rail not included)



We carry a range of spares & accessories for the Bike Lift



For more information and pricing, visit our website
www.roadpro.co.uk

CAMOS "Jewel" Rear-View Camera Systems

CAMOS "Jewel"

The neatest, cleverest
rear-view camera system ever!
Ideal for motorhomes & many campervans

Being able to see what's behind you when you're driving is essential if you're a safety-conscious driver. Up until now, if you wanted a camera system that looked back down the road when moving forward and also down to help when reversing, you had two choices: an expensive motorised camera or a bulky, clumsy looking twin-camera unit. Both systems do the job but there's a neater, less obtrusive, yet reasonably-priced alternative.

The new "Jewel" system from Camos uses clever software combined with a compact, high-quality camera that's discreet, yet gives a clear, bright, high-quality image on the monitor.

A choice of three monitors & three cameras



Jewel camera V1

"Jewel" systems are available with a choice of monitors: 5" & 7" dash-mounted models and a mirror-mounted version that clips onto an existing rear-view mirror.

There's a choice of cameras too: The V1 has a stainless-steel housing and a small amount of adjustment available. The V2 is enclosed in a heavy-duty plastic housing with a silver finish. This model is ideal when the camera is mounted on a vertical surface.

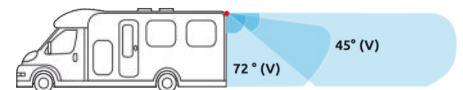
For Ducato, Relay and Boxer vans, there's a brake light version which simply replaces the existing housing. Whichever combination of camera and monitor you choose, you'll get the same dual images from the camera as shown below.



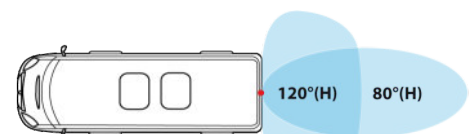
Jewel camera V2



Jewel camera for Ducato/Relay/Boxer vans



Reversing view angles



Driving view angles



OneView camera

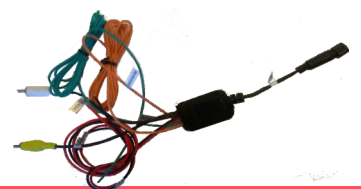
There are two more cameras in the Camos range: the OneView which has a single lens and a microphone and the CM-49, a twin-lens camera which also has a microphone. They can both be used with the same cable that comes with the Jewel.



CM-49 camera

Want to use a monitor
with phono connections?

We have an adaptor cable for converting a Camos camera lead to phono connectors. This enables a variety of monitors and head units to be used.



Many Adria motorhomes from 2015 onwards (except Twin & Sun Living models) have Camos camera cables installed at the factory, making installation simpler and quicker. Most Camos rear-view cameras can be used with the cable including the "Jewel" systems.

ADRIA

For more information and pricing, visit our website

www.roadpro.co.uk

DEKALIN - Trusted Adhesives & Sealants

DEKALIN

When you're installing products on a vehicle, you can depend on Dekalin products for easy application, a secure bond and long life

Superb bonding properties, great tensile strength, resistance to aging and the elements, and high UV resistance - these are just some of the advantages that Dekalin products offer.



Dekalin products are used by many of Europe's leading manufacturers, including:

HYMER

Globecar

FENDT
CARAVAN

bürostner

Grenzenlos wohlfühlen

carado

KNAUS



carthago

Hobby

Dethleffs
A friend of the family

LMC

LAIKA

ILUSION

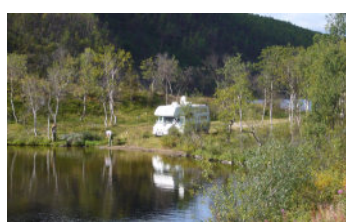
Sunlight

For more information and pricing, visit our website
www.roadpro.co.uk

Visit our website to see our range of 12V products for campervans, motorhomes & caravans



We use these products in our Rapido motorhome so that we can be sure that everything works as it should. And our customers know that our products will work for them too, whatever the vehicle and wherever it goes.

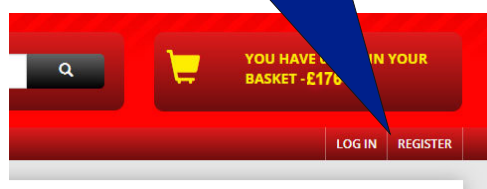


If you're a manufacturer, converter, dealer or installer, register for access to our trade website:

Visit roadpro.co.uk and click here to register for access to our trade website

Visit www.roadpro.co.uk and click the button marked **REGISTER**. Fill in a couple of forms and we'll do the rest.

- > See trade prices
- > See quantity breaks
- > Check availability
- > Place orders
- > Check previous orders
- > Save baskets



If you'd like a trade pricelist, email us and we'll send you one.

To find out more about our unique range of products, to place an order, or to open a trade account, visit our website

www.roadpro.co.uk

RoadPro Ltd: 3 Egerton Close, Daventry, Northants, NN11 8PE
E-mail: sales@roadpro.co.uk