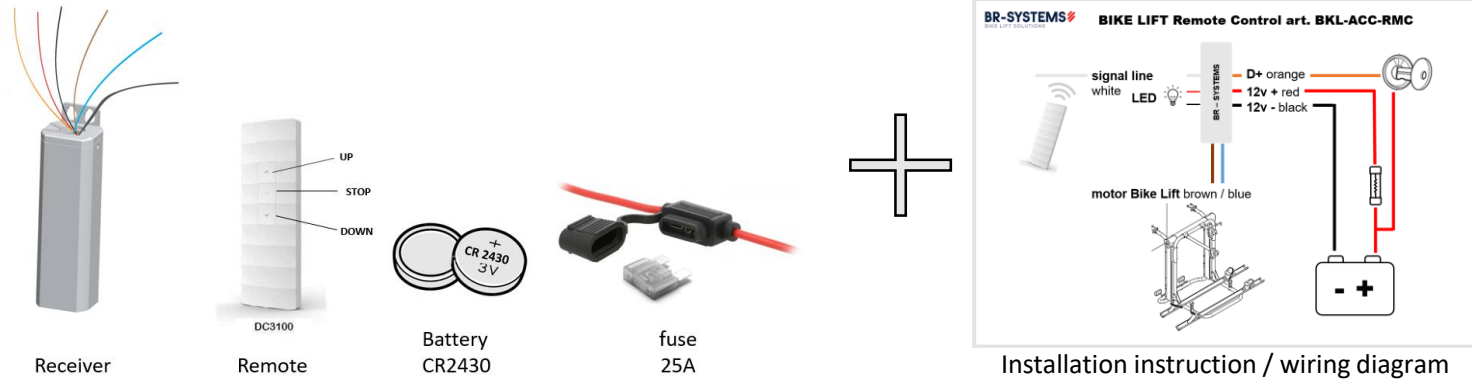


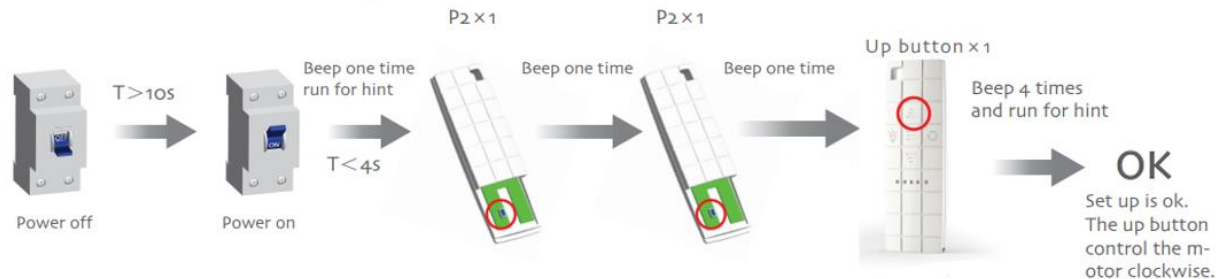
# BIKE LIFT Remote Control art. BKL-ACC-RMC

## PACKAGE



## LEARNING

- Step 1:** Remove backside of remote control (RMC) and add the battery.  
*Do not close the backside of the RMC, you'll need it in the programming.*
- Step 2:** Turn the power off
- Step 3:** Turn the power back on
- Step 4:** Press 1x P2 (backside of RMC, under the battery)  
*Wait 1 sec.*
- Step 5:** Press 1x P2 again.
- Step 6:** Press upper button on the frontside of the RMC.



## WIRING DIAGRAM

